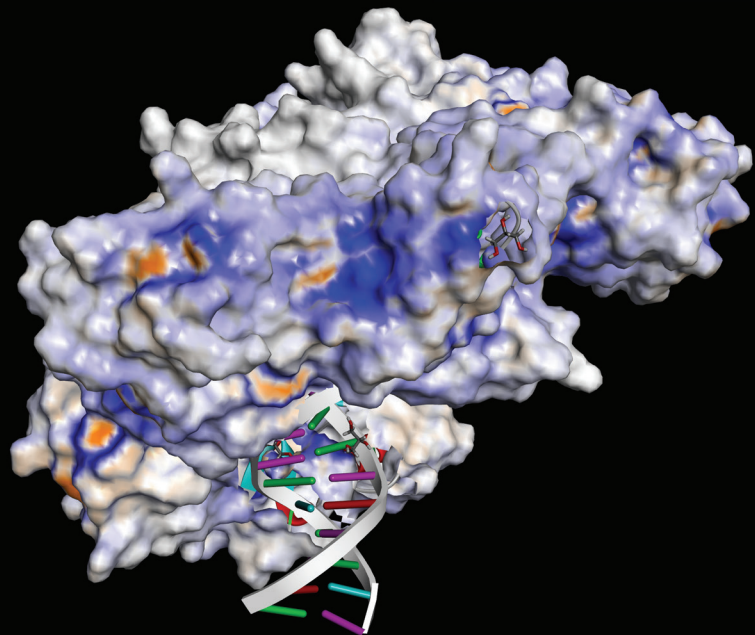
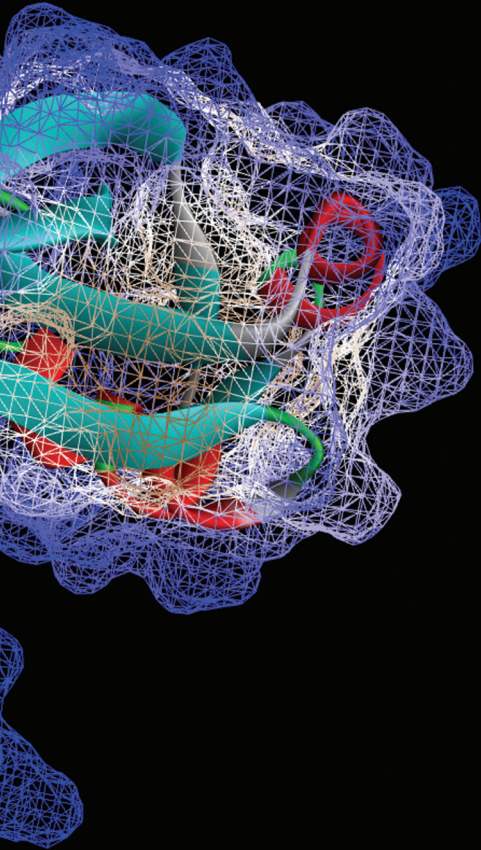


PROTEIN

PROTEIN ASSAY

- AviLMW™
- AviChem™
- AviBici™





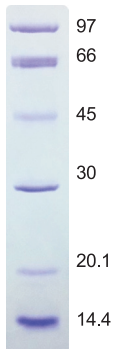
avigene

AviLMW™

Low Molecular Weight Protein Marker

AviLMW™ for SDS electrophoresis is a liquid mixture of six purified proteins ranging from 14,400 to 97,000 Dalton when used in denaturing polyacrylamide.

Mw (kDa) 12.5%

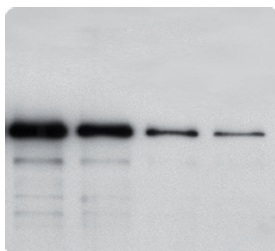


AviChem™

Chemiluminescence Substrate

AviChem™ is recommended for horseradish peroxidase (HRP) based Western Blotting procedures. Provided as a two component system, Solution A and Solution B.

The chemiluminescent light emitting can be quantitatively detected via regular autoradiograph film, CCD camera, or chemiluminescence reading device.



Advantages:

Suitable for western blotting and dot blot.

More sensitive than DAB and Alpha-naphthol.

AviBici™

Bicinchoninic Acid Protein Quantification Kit

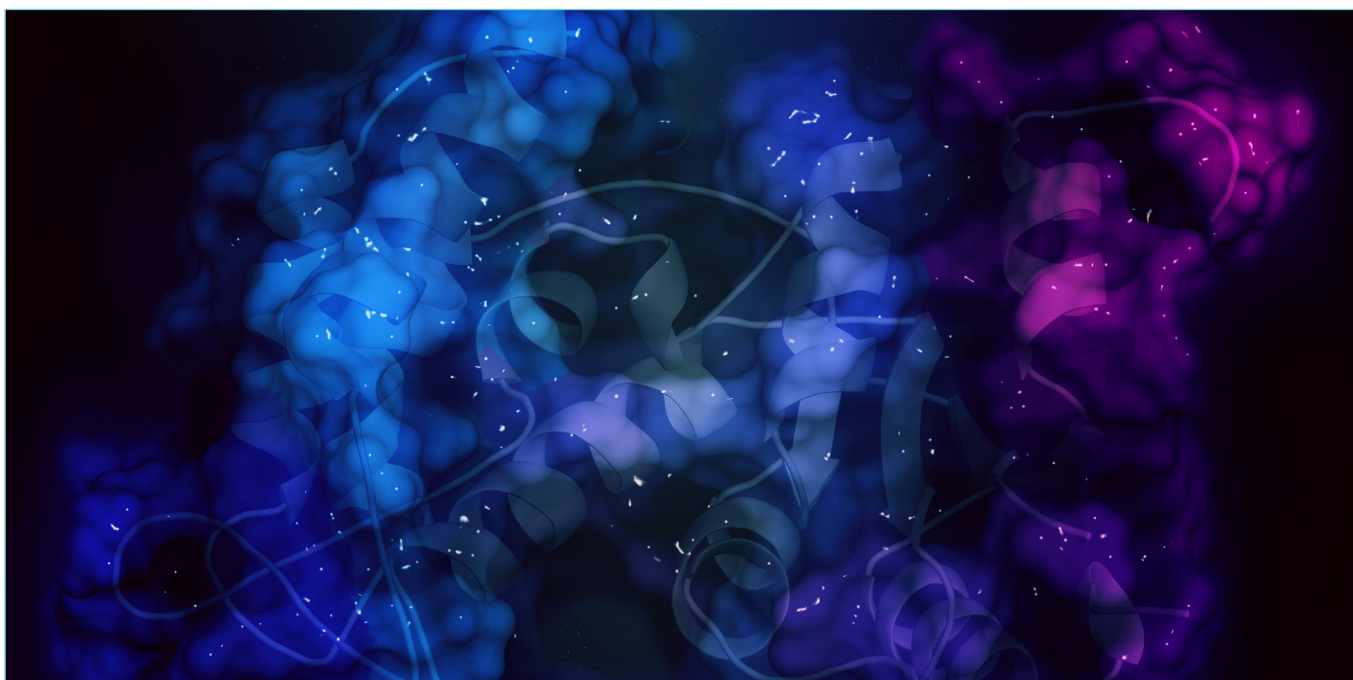
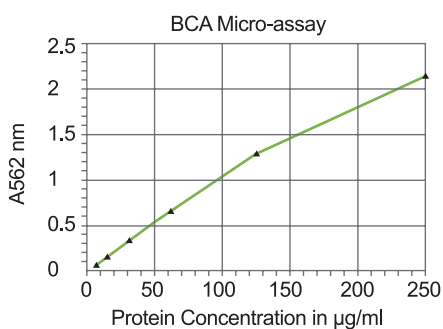
AviBici™ utilizes a copper (Cu_2^+) salt which can be reduced to the cuprous state by protein(s). AviBici™ is suitable for measuring of protein concentration in the range of 5~1000 $\mu\text{g}/\text{ml}$.

Advantages:

Less protein-to-protein variation.

Less affected by ionic and nonionic detergents.

Detection down to 5 $\mu\text{g}/\text{ml}$ with the enhanced protocol.





avigene

WWW.AVIGENE.CA
avigene@avigene.ca

Ver.2401